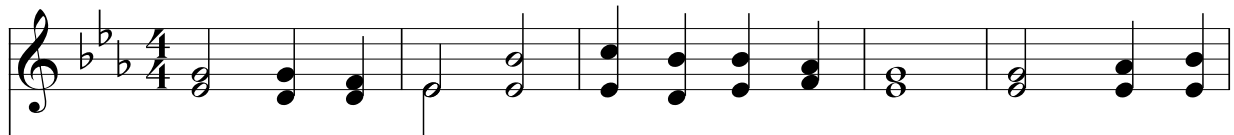


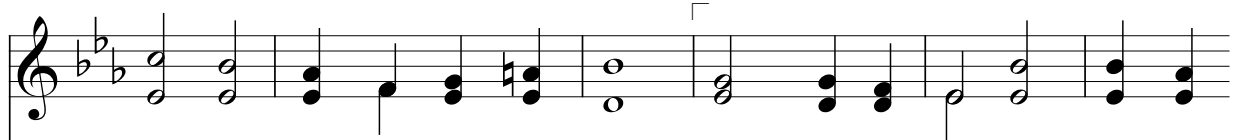
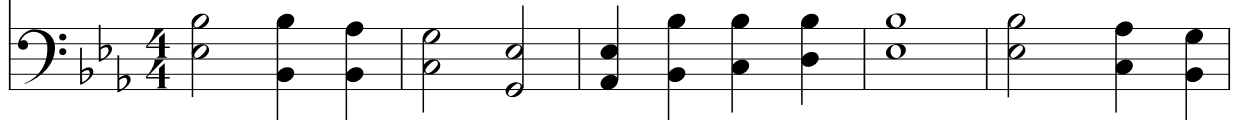
Abide with Me!

166

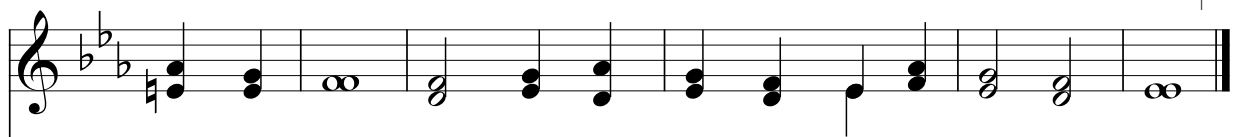
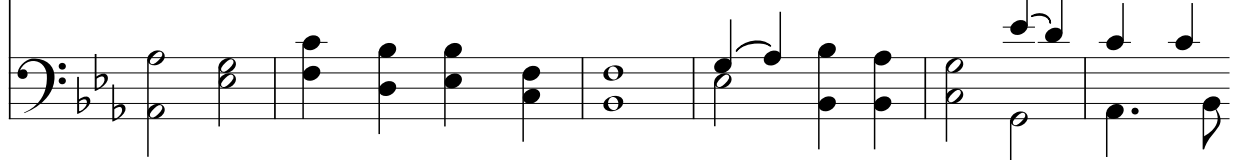
Reverently ♩ = 72-84



1. A - bid with me! fast falls the e - ven - tide; The dark-ness
2. Swift to its close ebbs out life's lit - tle day. Earth's joys grow
3. I need thy pres - ence ev - 'ry pass - ing hour. What but thy



deep - ens. Lord, with me a - bid! When oth - er help - ers fail and
dim; its glo - ries pass a - way. Change and de - cay in all a -
grace can foil the tempt - er's pow'r? Who, like thy - self, my guide and



com - forts flee, Help of the help - less, oh, a - bid with me!
round I see; O thou who chang - est not, a - bid with me!
stay can be? Thru cloud and sun - shine, Lord, a - bid with me!



Text: Henry F. Lyte, 1793-1847
Music: William H. Monk, 1823-1889

Luke 24:29
John 15:4-12